

Your one stop shop for all your  
maintenance and repair needs



IF YOU CANT SEE WHAT YOU NEED THEN PLEASE ASK US

**A.W.F Specialist Maintenance Systems Ltd**

Unit 1D Brymau 3 Estate, River Lane, Saltney, Chester CH4 8RQ

**Tel: 01244 677833**

**Fax: 01244 677844**

**sales@awf-ltd.com**

**www.awf-ltd.com**

**A.W.F Specialist Maintenance Systems Ltd**



## WELCOME TO AWF

With over 50 years experience in the field of industrial maintenance, you can rely on A.W.F. for advice on the maintenance systems that will solve your specific problems – fast, efficiently and at a price you can afford.

Solving problems in the following areas:-

- Roofing & Building Protection
- Flooring & Concrete Repairs
- Anti-Corrosion Coatings
- Floor Protection & Safety Systems
- Hygienic Wall Coatings
- Metal & Rubber Repair Systems
- Instant Tarmac Repair
- Fire Rated Expanding Foam



## COMMITMENT TO SERVICE

A.W.F. are committed to providing customers with informed advice and proven reliable maintenance systems which are cost-effective. We aim to offer the best in service and in pricing, without compromising on quality.

## TECHNICAL ADVICE

The Directors of A.W.F. and members of our customer service team are all experienced in the maintenance needs of the diverse industries we serve.

We will be pleased to advice on the options available to meet the specific requirements, or to answer queries about the systems detailed in this brochure. The products supplied by A.W.F. are manufactured to ISO 9002 and fully detailed Material Safety Data Sheets will be supplied upon request. A detailed Technical Data Sheet is supplied with all products.

## NATIONWIDE COVERAGE

A.W.F. are fully committed to serving the whole of the British Isles. For further information on any of our systems listed in this brochure, please contact our Head Office on:

**Tel: 01244 677833**

**Fax: 01244 677844**



## Problem Solving in the 21st Century



**Metal and Rubber Repairs**

**Roofing and Weather Proofing**

**Concrete Repairs**



**Flooring Protection and Anti-Slip Systems**

**Ancillary Products**

**Hygienic Coating Systems**



**Annaerobics**

**Spill Management**

**Chemicals**

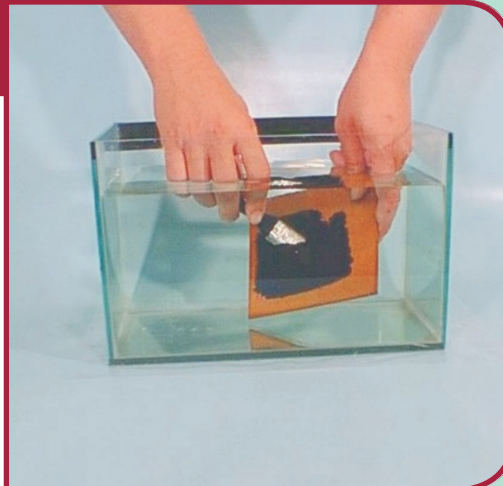


# THE FLEXSEAL SYSTEM

## STOP THOSE LEAKS – ANY SUBSTRATE – ANY WEATHER

### Available in Brush, Trowel, Gun & Spray Grades

- Can be applied to any substrate.
- Will not harden in the container.
- Fully resistant to U.V. Light.
- Can be applied even underwater.
- Excellent adhesion to all surfaces.
- Flexseal retains its flexibility.
- Flexseal is simple and easy to use.
- Complete Flexseal system to repair any type of roof.
- No skilled labour needed.



### FLEXSEAL FLEXI-TAPE

Flexi - Tape is a specifically formulated repair tape which has excellent adhesion to most building substrates. Flexi - Tape can be used to repair cracked roofing sheets, damaged guttering, cracked down pipes, glazing bars, reforming of flashings etc. The system can be applied to damp surfaces and does not deteriorate in our diverse weather conditions.



### FLEXSEAL BRUSH GRADE

- Applied by brush, roller or squeegee.
- Withstands stretching of 15% without loss of adhesion to the host substrate.
- Apply straight from the can onto felt, lead, asphalt, concrete, infact virtually all known roofing substrates.
- Withstands extremes of temperatures and has excellent resistance to U.V. Light.
- Extended shelf life, so absolutely no wastage.
- Utilising its unique water displacing agents Flexseal has the ability to be applied in bad weather conditions even underwater.



### FLEXSEAL B.G. ALUMINIUM

- Flexseal B.G. Aluminium is scientifically proven to reflect 95% of radiant energy.
- Formulated for one-coat application.
- Flexes with the host substrate.
- Resistant to U.V. Light attack.
- Easily applied over existing Flexseal repairs.
- Applied using a brush, roller or squeegee.
- Excellent shelf life.



### FLEXSEAL SPRAY GRADE

- Instant weatherproofing at the touch of a button.
- The ultimate leak repair system in aerosol form which is fully re-usable.
- Is fully compatible with all Flexseal systems.
- Ideal for those inaccessible areas.
- Can also be used as an underbody sealant on any industrial vehicle.
- Only available in black.



### FLEXSEAL TROWEL GRADE

- Flexseal Trowel Grade is a thixotropic system which makes it ideal for use in large gaps, cracks and gutter joints.
- Immensely durable system.
- Flexseal Trowel Grade remains flexible.
- Applied via a trowel, putty knife or similar tool.
- Can be applied in adverse weather conditions, even underwater.



### FLEXSEAL GUN GRADE

The ultimate repair system in cartridge form, designed for ease of application to be used via a standard mastic gun.

- Can be used in adverse weather conditions.
- Flexseal Gun Grade is fully re-usable.
- Provides the total answer to cracks in asphalt, leaking joints and flashings etc.
- Remains flexible at all times
- Excellent shelf life
- Available in 310ml cartridges



### WEATHERGUARD

A.W.F. Weatherguard is a fluid-applied co-polymer reinforced with synthetic fibres. Designed for use as an elastomeric roof or wall coating.

- No mixing, no priming, no fuss.
- Immensely durable system.
- Easy to use and quick to dry.
- Bonds to virtually all known building materials.
- Available in White, Green, Grey, Red, Blue.

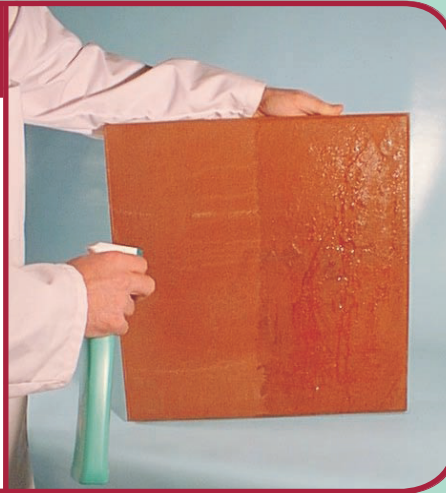




## FLEXSEAL CLEARSHIELD

Flexseal Clearshield is designed to protect your buildings from the damaging effects of rain, snow, penetrating damp and the immense damage which can be caused by the effects of freeze/thaw attack.

- Micro-porous system, allows the surface to breathe and dry out naturally, thereby avoiding the problem of internal sweating.
- External protection for up to 10 years.
- Specifically designed to prevent discolouration due to U.V. Light attack.
- Conforms to B.S. 6477 : 1984.



## FLEXSEAL SEAK & SEAL

Flexseal Seak & Seal is a natural material that swells to fifteen times its size on contact with water to form a temporary repair in minutes.

- Can be applied in the pouring rain.
- Single pack system.
- Ideal for those inaccessible areas.
- Seals in minutes.
- One man application.



## FLEXSEAL MEMBRANE

- Ideal for areas susceptible to movement.
- It has multi-directional movement.
- A must for all areas of high movement.
- Simply stipple into Flexseal when wet.
- Ideal for reforming damaged flashings.
- Supplied in 50m2 rolls or by the m2.



## FUNGAL WASH

- Kills all moss, lichen etc. Especially all the spores and roots.
- Will treat all known building substrates.
- Ideal preparation prior to applying any of the Flexseal products.
- Can be used on walls, paths, roofs etc.
- Fungal Wash is a single pack system
- Available in 5lt units
- Coverage rate is approx 20-25m2 per 5lts



# AWF CHEMICAL PROTECTION SYSTEMS



## CHEMITECT C.R. / U.C.

Chemitect C.R. and U.C. are two pack epoxy systems designed to combat aggressive corrosion and chemical attack. Both systems can be applied by brush or roller. Chemitect C.R. is designed for general protection of steel surfaces prone to chemical attack. Chemitect U.C. is designed to give protection to surfaces requiring resistance to aggressive chemicals.

## CHEMITECT E.P.

Chemitect E.P. is a two pack solvent free polymeric system that provides a tough impervious barrier. It has excellent resistance to a wide range of aqueous solutions under permanent immersion conditions.

## ABSORBENT / SPILL KITS

AWF offer a wide range of oil, chemical and maintenance spill kits. Pads, socks, booms and rolls which are all designed to suit your needs. Absorbent granules for all spillages. We are a leading supplier in spill control products incorporating Absorbents, Spill kit systems, drain protection and spill containment. Absorbent and Spill Kits are supplied in product categories; Oil Only, General Maintenance and Chemical, Pads, Socks, Booms, Rolls, Pillows, Cushions, Drum Top Covers plus assorted kits. Also available are Drum Trays, Ramps, Spill Pallets and polyurethane Drain Mats.





## A.W.F. FLOORTECT – TOTAL FLOOR PROTECTION

### FLOORTECT H.B.

The Ultimate Industrial Floor Coating System Available Today. Floortect H.B. is very easy to apply by brush or roller and is ideal for use in any industrial or commercial environment that requires the ultimate in floor protection.

- Six times thicker than normal coatings.
- Low odour during application.
- Totally impervious once cured.
- Very easy to clean.
- Excellent chemical resistance.



## SAFETY TREAD – THE ULTIMATE ANTI-SLIP SYSTEM

### SAFETY TREAD TAPE

Safety Tread Tape is available in a range of colours, it is very quick and easy to use and provides the ultimate answer to those problem areas including fire escapes, vehicle steps, inspection tanks, ramps and many more industrial applications.

- Simple and easy to apply.
- For interior and exterior applications.
- Coloured tape available in 18m x 50mm rolls.
- Dark Grey available in 18m x 150mm widths.



### FLOORTECT W.B.

Floortect W.B. is widely used both in the food and dairy industries. Being a water dispersed epoxy; it is totally odourless during application.

- Will adhere to damp surfaces.
- Can be applied over existing coatings.
- Good abrasion and chemical resistance.
- Can be applied to a wide range of surfaces including glazed tiles.
- Supplied with its own unique aggregate.



### SAFETY TREAD

**STOP ACCIDENTS BEFORE THEY HAPPEN!**

Safety Tread is widely used on ramps, fire escapes, walkways, step edges, potato peelers etc. Supplied in kit form containing liquid epoxy resins, specially graded calcined bauxite aggregate, spatulas, spreaders, and a unit of A.W.F. Universal Cleaner.

- Will bond to most substrates.
- Simple and easy to apply
- Withstands foot or vehicular traffic.
- Ultimate grip means ultimate safety.

Safety Tread / Coloured Safety Tread have a coverage rate of 1m<sup>2</sup> per Kg of Liquid metal.



### FLOORTECT S.P.

Floortect S.P. is an inexpensive single pack industrial floor coating, designed for those larger areas that do not require the protection of a twin pack epoxy floor coating.

- Very easy to apply by brush or roller.
- Provides a hard seamless finish.
- Areas coated are back in action next day.
- Also supplied in line marking grade.



### COLOURED SAFETY TREAD

A coloured anti-slip system specifically designed for step edges, ramps, walkways, etc. In fact anywhere there is a need to visually highlight dangerous or hazardous areas.

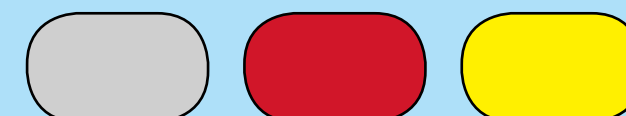
- Available in a range of high visibility colours.
- Excellent slip resistance.
- Good chemical resistance.
- Withstands foot or vehicular traffic.
- Is simple and easy to use.
- Will bond to virtually any surface.



The floortect range can be supplied in the colours below and for those larger jobs in custom made colours.



The Safety Tread range can be supplied in the colours below:



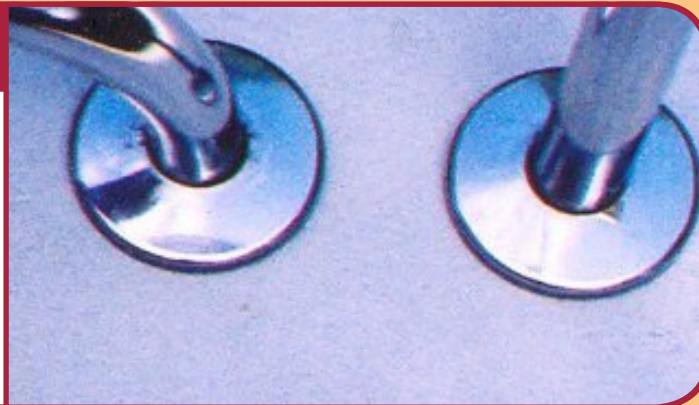


# A.W.F. CONCRETE REPAIR SYSTEMS

## SUPERQUARTZ POURABLE

Superquartz pourable is a unique blend of resins and aggregates designed for larger areas. Pourable can be mixed to any consistency you prefer and the area can be back in production within hours.

- Excellent chemical resistance.
- Bonds to most surfaces.
- Cure time is approx 6 hours.



## SUPERQUARTZ SCREED GRADE

Superquartz Screed Grade has all the properties of the Superquartz range, extremely hard wearing with excellent resistance to abrasion and impact. Offers good non-slip properties. Resistant to a wide range of chemicals, based on low odour and none tainting properties is ideal for food processing areas. Will bond to most substrates including metal and can be applied down to 3mm thickness with the aid of a tack coat. Supplied in 5mm and 10mm grades.



## SUPERQUARTZ RAPID

Superquartz Rapid has been specifically designed to carry out repairs with the minimum loss of production time. It has all the characteristics of Superquartz but with a cure time of only 1-3 hours.

This tremendously durable system will not shrink or crack during the curing process and has fantastic in-built strength and durability.

- Areas can be back in action within 1-3 hours.
- Can be feather edged.
- Excellent chemical resistance.
- After 24 hours. 38 ton trucks can be traversed over the repair.



## SUPERQUARTZ LIGHTWEIGHT

Superquartz Lightweight is a system developed for high build repairs to eroded, damaged or spalled areas of re-enforced concrete. It can be applied to a thickness of 100mm in one pass without slumping and being 100% solids there is no shrinkage during the curing process.

- Ideal for vertical or overhead work.
- Tolerant to cold and damp surfaces
- Excellent weathering capabilities.



# A.W.F. TARMAC REPAIR & TREATMENTS

## THERMOPLASTIC LINES / SYMBOLS / NUMBERS

AWF offer a wide range of Thermoplastic signs, numbers, letters and symbols.

The systems can be applied in hot or cold conditions and are ideal for playgrounds, car-parks, etc. Available in white and yellow and accompanied with a primer for obtaining perfect adhesion.

- Non Toxic
- Environmentally friendly
- Contains no lead or chromates
- Lasts 10 times longer than paint



## AWF PERMALINE

A single pack line marking paint for use on roads, runways, car-parks, sports grounds, factories, etc. Supplied in a wide range of colours. Extremely durable and cost effective. Easy and quick to use with good adhesion to most substrates. Permaline can be used on concrete and tarmac and is ideal for heavy traffic areas. The system can be applied by brush or roller and can be used internally or externally. Available in 5Ltr units.



## INSTANT TARMAC REPAIR

For fast effective repairs to asphalt, tarmac and similar surfaces. A.W.F. I.T.R is a combination of high quality quartz aggregates and specially formulated epoxy resin, which bond immediately the system has been applied to the substrate.

- No heating or tack coat (can be applied at -40°C).
- Can be used in wet or dry conditions.
- Single pack, so no mixing.
- Can be traversed immediately

The most effective way to repair potentially dangerous potholes. Wherever or whenever they happen!





# A.W.F. HYGIENIC COATINGS

## GLAZE COAT / GLAZECOAT S.P

British and European legislation dictates that wall surfaces in food production areas should be seamless, impervious and be easy to clean. Glazecoat is a cold-applied chemically-cured system that can easily be applied to most surfaces including brick, block walls, plaster, wood, even over existing glazed tiles and grouting to provide the ultimate in long term gygienic wall surfacing. Glazecoat is a twin-pack system and Glazecoat SP a single pack system.

- Can be brush or roller applied.
- Resists chipping and abrasion.
- Complies with all British and European legislation.



## MACHINE GUARD

Machine Guard is a twin pack water dispersed food-safe epoxy coating which is designed for the protection of all food grade machinery including: Hobart mixers, weighing scales, fridges, food trolleys etc.

- Impervious to fats and oils.
- Resists chipping and abrasion.
- Does not fade or discolour.
- Excellent chemical resistance.
- Easily applied by brush or roller.
- Non-toxic, non-tainting system.



## MELECO SPONGES

The Meleco sponges are available in two sizes. They cut through grease, grime and hard to shift stains. It is the ideal multi-surface cleaner for ceramics, plastics, glass, wood, paintwork, tiles, bathroom and kitchen surfaces – Almost anywhere!



## ANTI-CONDENSATION

Anti-Condensation is designed to provide an insulating layer on cold surfaces, thereby dramatically reducing condensation problems. This unique system is a combination of selected synthetic resins impregnated with cork dust.

- Simple and easy to apply by brush or roller.
- Single pack, so no mixing.
- Can be applied to most substrates.
- Can be over coated with any A.W.F. Wall coating system, or any conventional paint.



# MISCELLANEOUS SYSTEMS

## AWF ANNOROBICS

A comprehensive range of Annorobics, Cyandacrylates, Threadlocks, Retainers, Gaskets, Sealants and Epoxies.

- A range of superglues.
- Twin-pack, fast curing epoxy resins.
- High strength retainers.



## AWF CHEMICALS

A wide and extensive range of chemicals which include degreasers, vehicle-care, detergents, bleaches, toilet cleaners and hand cleansers.

- General purpose: Hard surface, multi-purpose, etc.
- Vehicle-care, T.F. remover, wash-wax
- Degreaser – solvent degreaser, tar remover.



## AEROSOLS

A large range of aerosols are available for all maintenance and repair solutions.

- Penetrating oils.
- Food safe lubricants.
- Belt dressing.
- Barrier creams.



## AWF TREAD SAFE

- Tread safe is 7 times faster than rock-salt.
- The system is non-corrosive.
- Tread safe is bio-degradable and can be used at minus 20°C.
- Can be used on roads, car parks, fire-escapes, ramps, etc.



## ANTI-SEIZE

THE ULTIMATE HIGH TOLERANCE ANTI SEIZE COMPOUND. AWF's Anti Seize Paste is an acid-resistant, water-proof, alkali-proof, ultra heat resistant, metal preserving anti seize compound. It prevents metal seizure and easily enhances the ease with which equipment can be efficiently dismantled for maintenance purposes. Used extensively throughout industries across the world. With excellent high temperature performance and allows components to be freed after service up to 800oC.





# METAL REPAIR SYSTEMS

## E.M. ALL PURPOSE METAL

E.M. All Purpose Metal is designed for repairing or re-building damaged machine parts. Its tremendous inherent strength once cured, makes the system a must for every engineering dept. Once full cure is achieved All Purpose Metal becomes part of the host substrate and can be drilled, machined, tapped etc. Curing time 4-6 hours.



## E.M. LIQUID METAL

E.M. Liquid Metal is a twin pack epoxy metal repair system, designed for the reclamation of pitted or porous metal surfaces, making the repair of vehicle fuel tanks, storage tanks, water tanks etc. Simple and easy to achieve. The addition of bauxite aggregate makes the system ideal for the resurfacing of brakes tester rollers. Curing time 4-6 hours.



## E.M. CERAMIC METAL

E.M. Ceramic Metal is designed for the protection of metallic surfaces which are prone to attack from erosion and corrosion, aggressive chemicals, etc. The system is available in Engineering and Liquid grades to aid application. Typical areas for use are: Valves, Condensers, Pipe bends, Pump casings. Curing time 4-6 hours.



## E.M. RAPID METAL 10

E.M. Rapid 10 is a fast curing twin pack epoxy metal repair system for emergency repairs to Pipes, Radiators, Damaged/Cracked sumps, Fuel tanks etc. Damaged components can be back in action in minutes reducing very costly downtime to an absolute minimum.



## REPAIR STICKS AND METAL TAPE

A.W.F. Repair sticks are available in the following grades Aqua, Steel, Plastic, Wood, Copper, Mortar and Aluminium. Repair sticks are quick to cure making them ideal for on-site repairs. A.W.F. Metal Tape is quick and easy to use. It comes supplied on a unique plastic reel making it ideal for storage in any maintenance tool box.



# RUBBER REPAIR SYSTEMS

## FLEXIBLE RUBBER 60 - 80

Flexible Rubber is a twin pack rubber repair system, which comes supplied in two grades, Liquid and Engineering. The systems are very tough and durable with a shore "A" hardness of 60 or 80. Some typical applications are damaged impellers, Split rubber rollers, Damaged conveyor belts, Pipe bends etc. Curing time is 6-8 hours.



## AERO-PACK RUBBER

Aero-Pack Rubber is the quick and easy way to repair, bond and seal between glass, metal, concrete etc. Aero-Pack Rubber is the new self-propelled instant leakproof gasket maker that will replace cork, felt and rubber.

- Ideal for sealing windscreens.
- Self-propelled, no guns required.
- Approved by General Motors.
- Fully re-usable cartridges.



## FLEXIBLE RUBBER U.W.

Flexible Rubber Underwater is a unique one component rubber system, designed for sealing gaps and cracks in a whole range of substrates. It has the ability to be applied underwater and has tremendous resistance to chemicals.

- Single pack, easy to use.
- Excellent resistance to ageing.
- Available in black, white and clear.



## QUICKMIX 85

Quick - Mix Rubber '85' is a twin pack rubber repair system. The system is mixed via a unique mixing gun and nozzle. Once cured Quick -Mix Rubber '85' will reach a shore 'A' hardness of '85' after approximately 15 minutes.

- A tremendously durable system.
- Ideal for repairing rubber bumpers.
- Superb for repairing off the road tyres.



## FLEXIBLE RUBBER XL 45

XL 45 is a moisture cured adhesive – sealant, XL45 provides a very durable bond to Steel, GRP, Plastic etc. It is ideal for use where two substrates need to be bonded, or to provide a seal against vibration or smells. It is widely used as a seal in manhole covers subject to vehicular stresses.





## HANDWIPES

A range of hand-wipes for all circumstances. The ultimate in handwipes which provide protection against Wells disease and can be used to clean-down machine parts, ideal for pre-painting, removing most chemicals, paints, markers etc. They leave hands fresh and clean.

1. Heavy Duty: For hands, tools, surfaces, etc.
2. Engineering Wipes: Abrasive hand cleansing wipes.
3. Graffiti Wipes: Anti-bacterial wipes.
4. Welding Wipes: Contains 70% Isopropal alcohol.



## LINEMARKER

The fast and effective way to paint lines on any surface, inside or out. Ideal for use in factories, warehouses, car parks, sports fields, tennis courts etc. Application can be carried out either by hand or using our four wheel or two wheel applicator for greater manoeuvrability. Available in White, Yellow, Green, Blue, Black, Red and Orange.



## PIPESEAL WITH TEFLON

A.W.F. Pipeseal is a liquid P.T.F.E. Cream that has been specifically designed to replace Hemp/Stag. Boss white and P.T.F.E. tape. It is approved to BS/EN 6951 / 6952 for use with family gases 1,2,3. It is approved by British Gas and is widely used by their engineering arm Transco. It offers the end user a real alternative to old fashioned methods.



## RAPID POINT

Rapid point is a single pack powder component mixed with water, and then put into a tube which is then applied by a gun and nozzle. The material can be coloured to suit. Rapid point allows for movement between joints and resists freeze-thaw conditions. Rapid Point is specifically formulated for the jointing of flags, repointing of brickwork, block-work and stone walling and is fast and easy to apply.



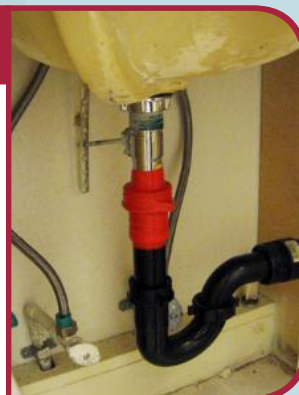
## SUPER RUBBER P.G.

Super Rubber P.G. is a twin pack poly-sulphide rubber system which has been specifically designed for industrial expansion joints. It has tremendous resistance to chemical attack. Applied from a watering can or similar vessel, Super Rubber P.G. provides a simple but very effective way to handle those troublesome expansion joints.



## A.W.F. RESCUE-IT TAPE

AWF Rescue-It tape is an award winning, self-fusing silicone repair product for emergencies and all purpose repairs. Rescue-It tape is the strongest, fastest-fusing repair tape on the market and is available in a range of colours. Rescue-it tape will quickly and easily create a permanent air-tight, water-tight seal in minutes or even seconds. You can repair leaks on plumbing and hoses, make underwater repairs, use it on electrical wiring or as a shrink-wrap, wrap tool handles and much more.



## RUSTECT S.P.

Rustec S.P. is a single pack rust inhibitor that has been specifically designed for a one-coat application onto manually prepared rusty steelwork. Once cured, Rustect S.P. can be overcoated with any conventional paint. The system is ideal for use on fire escapes, pumps, valves, hand rails, fencing, metal doors, vehicle chassis etc.



## AWF PLUMBING KIT

AWF Plumbing kits are designed to tackle a wide range of problems. The kits contain the following:

- Repair Bandage: Pipe repairs.
- Repair Straps: Leak – stopper.
- Flexible Rubber U.W: Under-water sealant.
- Aqua Bond: Quick, simple and easy.
- Hand Wipes: Heavy duty wipes.



## FOAMSEAL

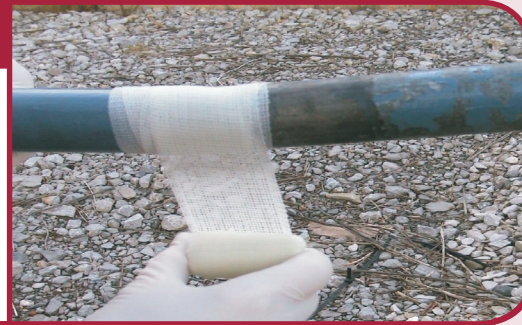
Foamseal has been specifically designed for sealing ducts above and below ground to stop the ingress of Gas, Water and Oil. This fire-rated system is extensively used by Electricity, Gas, Water and Telephone companies nationwide. The system is also widely used for sealing voids around door frames, window frames etc. Foamseal comes supplied in 500ml and 750ml containers. Both systems can be used via our unique applicators.





## REPAIR BANDAGE

A.W.F. Repair Bandage is a rapid curing moisture activated bandage specifically developed for the repair of leaking pipes. Repair Bandage is quick and easy to use and can be applied to a wet pipe. It reaches full cure in approximately 30 minutes making it the ideal repair system for any maintenance dept.



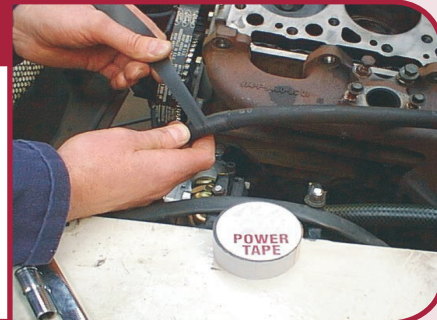
## IMPRUVISE

A unique Isophthalmic resin matrix, supplied in a patch which is used to repair any type of industrial part or component that has become pitted, holed or split. Impruvise can be moulded and shaped to fit the contours of any type of industrial park. Cures in a matter of minutes so very little downtime. Impruvise is very simple and easy to use. Once cured it can be sanded, machined and painted to blend in with the host substrate.



## POWER TAPE

Power Tape is a specially formulated single pack self amalgamating tape designed for repairs to rubber hoses, electrical cables, hose-pipes and can even use used under pressure on most types of water pipes found in industry. Available in 19mm, 25mm and 50mm widths. The system is a must for all maintenance departments.



## DRAIN CLEAN

An inhibited sulphuric acid based product designed to quickly clear blockages in drains caused by grease, hair, soap, sanitary towels, paper and many other organic substances. Safe on most civil and industrial plumbing systems. It will remove lime scale and rust in drain traps. A major advance in drain technology, seeks out, locates and eliminates all organic blockages.



## METAL COAT

Metal Coat is a unique air cured polyurethane metal coating. It has tremendous flexibility and resistance to attack from the elements. It is simple and easy to use. Cures in 30 minutes so machinery can be back in action very quickly minimizing downtime. Metal Coat can be supplied in a wide range of colours.



## GRAFFITI REMOVER

Graffiti Remover is a water based system that can be safely used to remove all types of Graffiti. It is virtually odourless so can be used in all delicate areas including classrooms and public areas. It usually only requires one treatment and the system has an indefinite shelf life.



## SAFETY STEP EDGE

Safety Step Edge has been developed as a cost effective, long term solution for slippery steps. Available in two grades for internal and external steps.

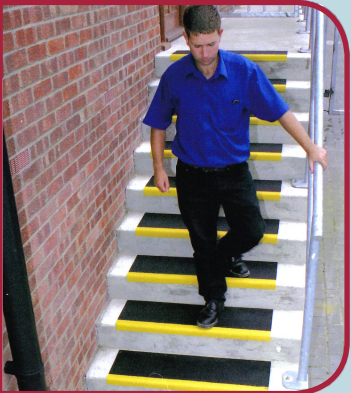
- Standard sizes: 70mm x 30mm and 55mm x 55mm.
- Easy and simple to install
- Exterior or interior grades available.
- Long lasting and cost effective.



## SAFETY TREAD COVERS

Our GRP Safety Tread Covers are extremely durable and simple to install. They can be fitted to wooden, concrete or metal steps in minutes.

- Can be cut to size as requested.
- Corrosion resistant.
- Can be screwed or glued to any surface.
- Tremendous slip-resistance even in the wet.
- Suitable for heavy trafficked areas



## SAFETY GRIP COLOURED

A.W.F. Safety Grip is designed to offer industry the ultimate highly visual, high skid resistant system. The system has been designed for Ramps, Pedestrian Walkways, Pelican Crossings, Cycleways, Manhole Covers, and Railway Platforms.

- Available in nine colours.
- Twin pack Solvent Free System.
- Bonds to virtually all known substrates.
- Chemical Resistant.
- Simple to apply.
- Low temperature curing properties.



## LADDER SAFETY RUNG

Designed specifically to fit over traditional steel ladder rungs.

- Permanent slip resistance in most areas.
- Exceptionally hard wearing.
- Sizes available: 25mm x 25mm and 38mm x 38mm
- Constructed from durable chemical resistant fibreglass.
- Quick and easy to fit-minimum downtime.
- Resists chemical attack from corrosive fluids transferred from footwear.



## SAFETY CLEATS

Self adhesive safety cleats for hazardous stairs, steps, etc. They can be used and applied to wooden, metal and concrete steps for high visible warning. Awf Safety Cleats are extremely hard wearing and are an effective way to improve safety. 1 Easy and quick to apply 2 Exterior or Interior use 3 Available in Black, Yellow, Watch Your Step and Caution.

